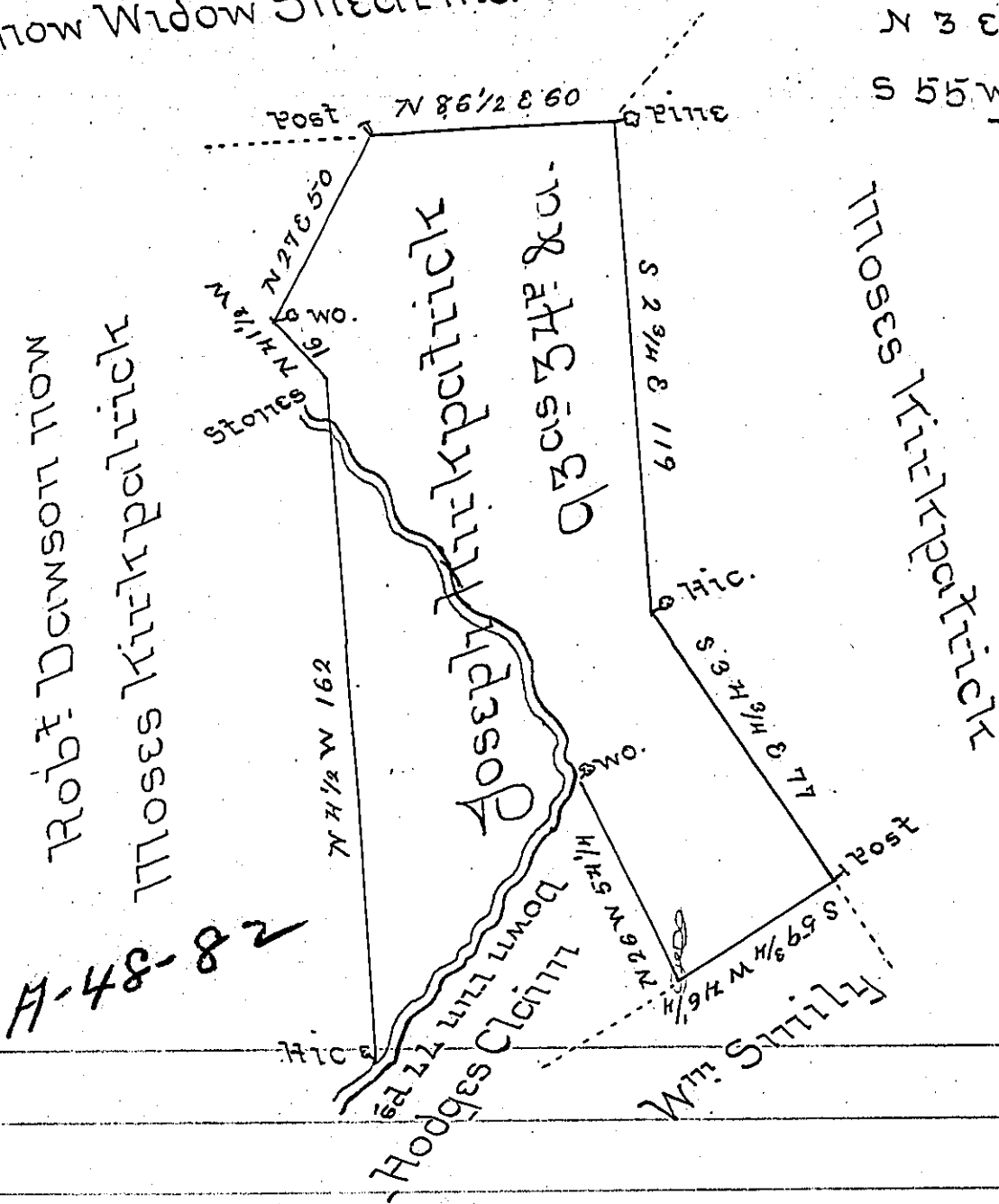


Andrew Berryhill
now Widow Shearman

Courses and Distances
Down the run from the Wo.

N 3 E 21

S 55 W 56 To Hic
77



The Draught of a tract of land situate in Rye
Township Cumberland County containing ninety
three acres & thirty four perches & allowe &c =
Resurveyed June 16th 1803 on a Warrant granted
to Joseph Kirkpatrick Dated 17th August 1790 =

W^m Ramsey D.S.

To Saml Cochran Esquire,
Surveyor Genl. of Pennsylv^a

IN TESTIMONY that the above is a copy of the original remaining on file in
the Department of Internal Affairs of Pennsylvania, made
conformably to an Act of Assembly approved the 16th day of
February, 1833, I have hereunto set my Hand and caused
the Seal of said Department to be affixed at Harrisburg,
this fourteenth day of June 1905.

Loae R. Brown
Secretary of Internal Affairs.